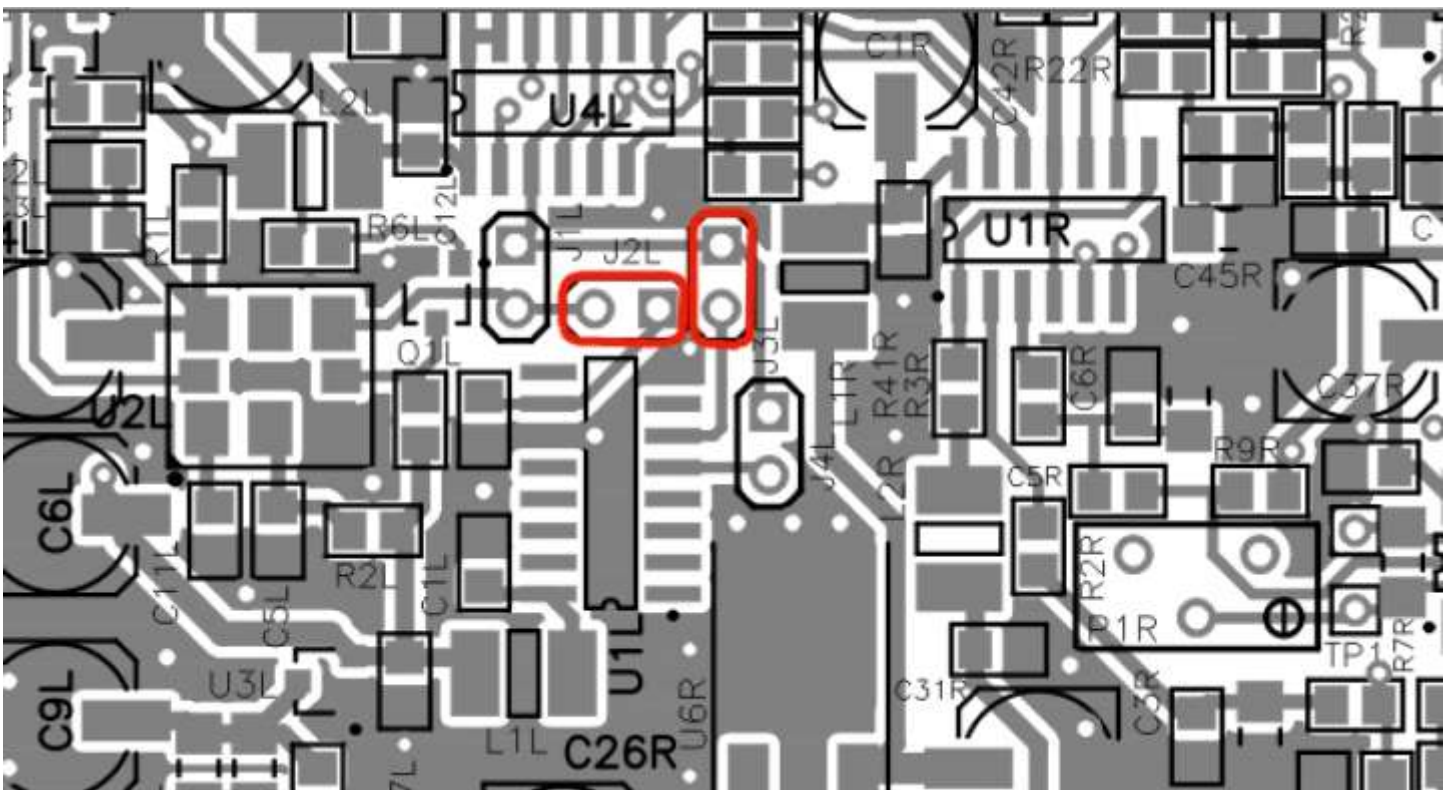
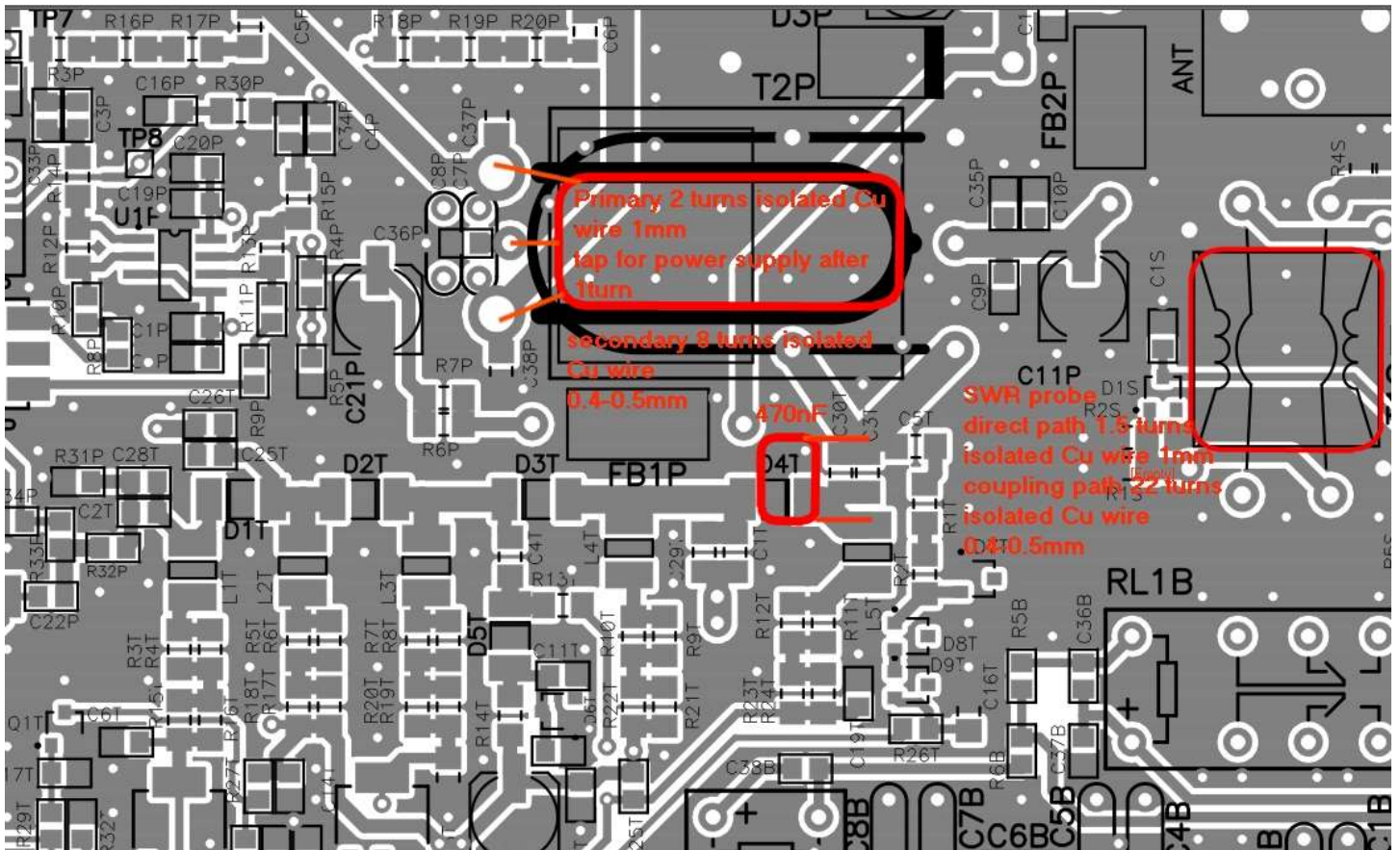


LO setup for 137kHz-2200m version



LO setup for 500kHz-600m version



Output power amplifier modification for LF 137kHz and 500kHz

1. Add 470 nF through hole capacitor paralel to C30T and C3T
2. Output transformer:

Primary: 2 turns copper Cu isolated wire diametar 0.8-1mm

Secondary: 8 turns isolateted Cu wire diametar 0.4-0.5mm

3. SWR probe

Direct path in original HF version wire passing through ferrite hole now has 1.5 turns Cu wire isolated 0.8-1mm

Coupling path in original has 11 turns now 22 turns isolated Cu wire 0.4-0.5mm